



PSREI NEWSLETTER

Official Newsletter of the Philippine Society of Reproductive Endocrinology and Infertility, Inc.

Volume 5, Issue 12

September, 2003

Welcome Participants!

The Philippine Society of Reproductive Endocrinology and Infertility (PSREI) welcomes all delegates to its Annual Convention today and tomorrow, September 10 and 11, 2003 at the EDSA Shangrila Hotel. The theme for this year's convention is "Solutions to Current Problems in Reproductive Endocrinology and Infertility". PSREI president Rogelio P. Mendiola and PSREI vice president/convention chairman Dr. Santiago A. del Rosario are expected to welcome today's attendees.



Board of Directors with Dr. Yeong Cheng Toh.

New PSREI fellows inducted today

Nine (9) new fellows who have passed the recent written and oral examinations by the Certifying Board of the PSREI are expected to be inducted in simple ceremonies during the opening ceremonies of this year's annual convention.

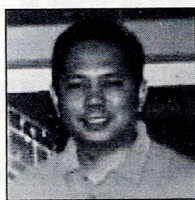
The new inductees include Dr. Anthony Marc B. Ancheta, Dr. Ma. Cecilia Anes, Dr. Gregorio Arcadio P. Banzon, Dr. Mary Joyce B. Flores Medina, Dr. Debbie Guani Dy-Meguizo, Dr. Vaneza Valentina L. Penolio, Dr. Gaylie Sotto, Dr. Maria Victoria Romuladez Tan, Dr. Teresa Villamayor.

This year's examiners include Drs. Lilia P. Luna, Rogelio P. Mendiola, Corazon T. Lim, Leonardo A. Almeda, Ma. Trinidad R. Vera, Grace Serrano, Patria Punsalan, Marlyn Dee, and Santiago A. Del Rosario.

The members of the 2003 Certifying Board: (Chairman) Dr. Greg B. Pastorfide, Dr. Florante P. Gonzaga, Dr. Delfin A. Tan, Dr. Leonardo A. Almeda, Dr. Ma. Trinidad R. Vera, Dr. Rosalinda B. Arceo and Dr. Lilia P. Luna.

On this Issue:

- | | | | |
|---|---|---|---|
| 1 | - Welcome Participants! | 3 | - Eight Entries Vie for PSREI Most Interesting Case Contest |
| | New PSREI Fellows inducted today | | - Amendment to the PSREI Constitution |
| 2 | - Editors' Corner | 4 | - President's Corner |
| | - Message by the Chairman of the organizing committee | | - Roche Article |



EDITOR'S CORNER

Format of the Annual Convention

This year marks another year in our young society's history. With the addition of new fellows to our roster, our membership has increased to over seventy fellows. And this is bound to increase even more over the next few years with the imminent accreditation of the St. Luke's fellowship program along with the recently inaugurated program of the Consortium. These programs, along with that of PGH, would mean that about 4-6 new sub-specialists in reproductive endocrinology and infertility would be coming out on a yearly basis.

Already, there are a lot of issues that need to be addressed with this fairly rapid increase in population. One issue which I had previously tackled concerns the maldistribution of certified fellows to the Metro Manila region (over 90%) which I mentioned appears an outright disservice to the country if remaining unchecked. I will not sound redundant this early but will just remind the various programs to keep this figure in mind whenever they accept new applicants to their fellowship programs.

The issue that I would rather focus on this time would be concerning the format of the annual convention. I had previously noticed that our convention was designed as a lecturer-listener format which would be the appropriate design for small or infantile societies where only a few would have had occasion in accumulating new ideas & concepts in REI— and that the next job was to disseminate to the others. However, with a strong membership of over 70, I believe we are already in a position where a lot of members have lots of new ideas of their own which should be shared with the entire group. These ideas are not necessarily lectures but interesting cases or researches which they have encountered the past year or so.

In this case, I feel that a portion of the annual convention should now involve a bigger proportion of the society, not just the usual 10-15 lectures. Others could be involved in poster presentations, or 10 minute discourses on interesting cases or helpful research or unverified raw ideas. Whether this should be presented as plenary topics or simultaneous sessions remains to be discussed by a focused group for the next conventions.

I think this is a healthy evolution which we must take. Similar to the evolution of teaching methods (as what is being done with problem-based learning) where "student empowerment" is now the trend to lessen "teacher empowerment", I believe that we not only can learn from the few prominent members of the society but everyone is capable of pitching in their own share of bright ideas. This way, the intellectual growth of the PSREI is assured to occur at a much faster pace.

Message by the Chairman of the Organizing Committee

Dear Colleagues,



It is my pleasure to reiterate my invitation for everyone to attend the 9th Annual Convention of the Philippine Society of Reproductive Endocrinology and Infertility on September 10-11, 2003 at the Isla Ballroom, EDSA Shangri-La Manila, Mandaluyong City.

The PSREI Committee on Scientific Affairs has invited foreign and local speakers who will elaborate on the solutions to current problems in reproductive endocrinology and infertility. In the open fora you are welcomed to present your opinions, questions and consultations not only on the subject matter to be discussed but on problems you encounter with your patients as well.

So, once again, join the convention and take advantage of the faculty.

Santiago A. Del Rosario

SANTIAGO A. DEL ROSARIO, MD

Overall Convention Chair

Vice President

PSREI NEWSLETTER

<i>Editor-in-chief</i>	: Dr. Virgilio M. Novero Jr.
<i>Pictures</i>	: Dr. Rogelio P. Mendiola
<i>Articles</i>	: Dr. Virgilio M. Novero Jr.
	: Dr. Santiago A. Del Rosario
	Roche Consumer Health
<i>Secretariat</i>	: Ms. Sarah Jane C. David
	G/F POGS Bldg.,
	# 56 Malakas St., Diliman, Q.C.

This newsletter is the official publication of Philippine Society of Reproductive Endocrinology and Infertility, Inc. It is printed quarterly and distributed to the members of PSREI.

Eight Entries Vie for PSREI Most Interesting Cases

A total of eight scientific papers reporting interesting cases in a variety of reproductive endocrinology and infertility topics will be vying for the distinction of becoming PSREI's most interesting cases for the year 2003.

The eight finalists individually authored by six OB-GYN residents and two REI fellows in-training, will be contesting the first, second and third place prizes worth P12,000, P7,000, and P5,000 respectively. Finalists who would not land in the top 3 would be awarded consolation prizes worth P1,000 each.

The finalist in order of presentation are:

1. Reconnecting to Life: Successful Reversal of Tubal Ligation (Judith Galang, MD; UP-PGH)
2. Congenital Mullerian Anomaly: Transverse Vaginal Septum with Cervico-vaginal Agenesis in VACTERYL Syndrome (Jennifer Santos, MD; UP-PGH)
3. Inguinal Endometriosis (Catherine Maliwat, MD; UP-PGH)
4. Bicornuate Uterus with Bilateral Ovarian New Growth (Analyn Fuentes-Fallarme, MD; UP-PGH)
5. Surgical Site Endometriosis (Claire Panganiban-Aguirre, MD; UP-PGH)
6. Creation of Sigmoid Neovagina in Mayer-Rokitansky-Kuster-Hauser Syndrome (Rudie Frederick B. Mendiola, MD; UP-PGH)
7. Severe Ovarian Hyperstimulation Syndrome During in Vitro Fertilization: A Case Report (Diana B. Javier, MD); Manila Adventist Medical Center)
8. Heterotopic Pregnancy (Romerico Torres, MD; UP-PGH)

Amendments to the PSREI Constitution

Dr. Romana G. Borromeo, Committee on Amendments chairperson, has released the following proposed amendments to the present constitution of the society. All are encouraged to note their comments and will be discussed in detail before final voting and approval is given by the entire collegial body during the annual convention.

ORIGINAL ARTICLE:

Article VIII. Section 2. COMMITTEE MEMBERS.

Each committee shall be composed of a Chairman, and four (4) members to be appointed by the President and approved by the Board of Directors. The members may be recommended by the chairman. The committee chairman and members shall hold office for one year.

PROPOSED AMENDMENT:

Article VIII. Section 2. COMMITTEE MEMBERS.

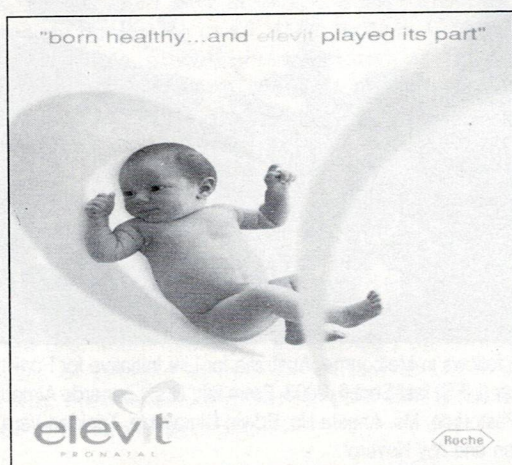
Each committee shall be composed of a Chairman, and four (4) members to be appointed by the President and approved by the Board of Directors. The members may be recommended by the chairman. Committee chairman and members may be appointed every year for a maximum of three years.



PSREI fellows in Melbourne, Australia for Life Initiative for Fertility Experts Seminar (LIFE) last Sept 6, 2003. From left: Drs. Leonardo Almeda, Greg & Gina Pastoride, Ms. Angela Ho, Edwin Dimayuga, Trinidad Vera, Tellie de Guzman and Joy Novero".

Roche Consumer Health offers Clinically Proven Multivitamin

RCH or Roche Consumer Health, one of the independent divisions of Roche Phils., offers the public an array of consumer products that can be observed in tri media like TV, print and radio. These products include Rogin E, the division's banner product, Berroca. In 2001 it ventured into medical promotion of what they consider as a breakthrough product called Elevit a special formula for a healthy baby. It is primarily for those women who are planning for pregnancy, are pregnant and lactating mothers. Though the study was conducted in Hungary in the early 90's, it resulted to impressive figures in three major aspects namely: 100% protection from neural tube defects from about 2773 pregnant patients who took Elevit one month prior to planned pregnancy, Placebo had a number of cases of NTD. Elevit also reduced the incidence of other congenital malformations by 47% like limb deficiency, cardiovascular defects and others. More interesting part was the reduction in the incidence of nausea, vomiting and dizziness by 54% in the first trimester of pregnancy. The multivitamin used is now being ethically promoted to OBs and infertility specialist with the objective of helping the mother prepare for the gift of new life. The great challenge for the team is how to reach more OBs in the country with its small number of representatives at 13. Though major hospitals in the land are visited and Elevit detailed to, optimally RCH can only reach about 50% of the OB population. The intention of expanding the team is there and basically lies in the acceptability of the product by the OBS to make it financially viable. RCH has proudly partnered with PSREI with its initial financial support to some of the organization's projects in 2003. The affinity of RCH and PSREI is something that may extend in time to achieve mutual benefits.



The President's Corner.....

Dear Colleagues and Friends,

The seed was planted this year when the new board of PSREI conceived this year's major activity, the 9th Annual Convention with the theme "Solutions to Current Problems in Reproductive Endocrinology and Infertility", and now the time has come to harvest the fruits of the concerted efforts spearheaded by the overall chairman, our vice president, Dr. Santiago A. Del Rosario.

We are fortunate enough to have our dreams come true with the confirmed attendance of our valued foreign speakers and our equally competent local specialists who have prepared for their chosen topics, for the success of our annual convention.

The members of the board of PSREI, together with the different committees in charge of the preparation, inspired by our previous leaders and the unending support of our sponsors and benefactors, we are therefore pleased to invite all the members and participants to partake of this activity.

Over the years, the field of Reproductive Endocrinology and Infertility has attained unequalled expansion in clinical and basic data as well as unparalleled growth in modern technology. The progress and growth has also required a much greater need to share information and actively discuss controversial issues involving the diagnosis, evaluation and management of common and not so common problems in the field of our subspecialty.

Besides the expected interactive sessions and acquisition of new knowledge and skills, we expect the renewal of our friendships and possibly make new ones. We look forward to see you and be a part of this productive endeavor.

May the good Lord bless us all.

ROGELIO P. MENDIOLA, MD
President, PSREI

